

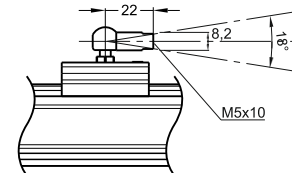
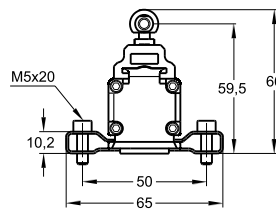
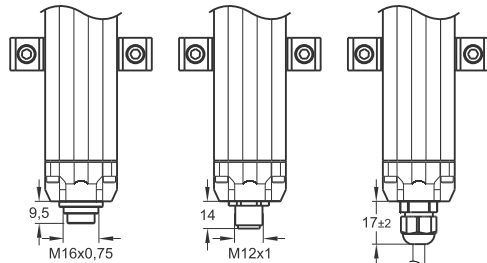
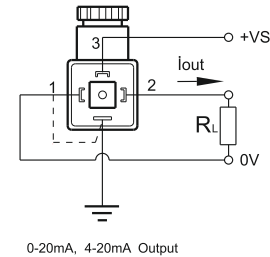
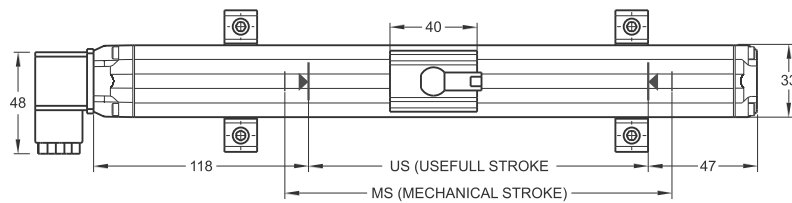
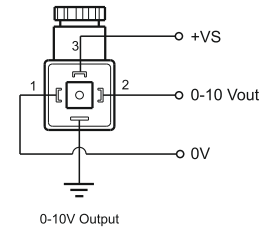
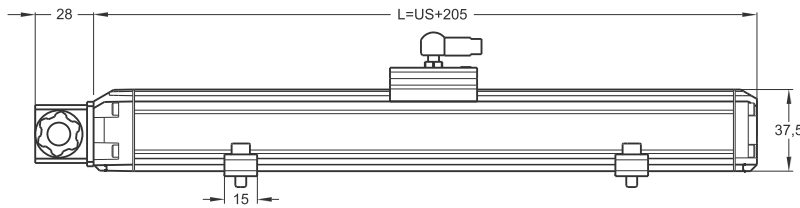
Magnetostrictive Position Sensor

- Measuring range 100 - 3000 mm
- 16 bit resolution
- Output 0...10 V, 0...20 mA, 4...20 mA
10...0 V, 20...0 mA, 20-4 mA
- 24 VDC power supply



Technical specifications

Measurement stroke	100 to 3000 mm
Resolution	16 bit DAC output
Repeatability	±0,005% (full scale)
Output	0 - 10 V, 4 - 20 mA, 0 - 20 mA, 10 - 0 V, 20 - 4 mA, 20 - 0 mA
Power supply	24 VDC ±10%
Displacement speed	< 10 m/s
Sampling rate	up to 2 kHz (depending on stroke length)
Max. consumption	50 mA - 90 mA (depending on stroke length)
Max. output noise	< 5 mVpp
Max. output value	10.5 V
Linearity	±0,02% full scale (min. 100 µm)
Update time	0,5 ms up to 1000 m / 0,8 ms up to 2000 m
Reverse polarity protection	Up to -30 VDC
Overvoltage protection	Up to 40 VDC
IP protection	IP 65



MSW (mm)	100	150	200	250	300	350	400	450	500	550	600	650	700	750	800	850	900	1000	1100	1200	1300	1400	1500	1750	2000	2250	2500	3000
US (Usefull Stroke)	140	190	240	290	340	390	440	490	540	590	640	690	740	790	840	890	940	1040	1140	1240	1340	1440	1540	1790	2040	2290	2540	3040
MS (Mechanical Stroke)	160	210	280	310	360	410	460	510	560	610	660	710	760	810	860	910	960	1060	1160	1260	1360	1460	1560	1810	2060	2310	2560	3060
L (Total Length)	305	355	405	455	505	555	605	655	705	755	805	855	905	955	1005	1055	1105	1205	1305	1405	1505	1605	1705	1955	2205	2455	2705	3205

Model	Measurement stroke	Resolution	Output	Connector / Cable
(example) MSW	300	A	V10	C1
MSW	100 ... 3000 mm	A: 16 bit	V10: 0 - 10 V V01: 10 - 0 V I40 : 4 - 20 mA I20 : 0 - 20 mA I04 : 20 - 4 mA V11: 0 - 10 V / 10 - 0 V I41 : 4 - 20 mA / 20 - 4 mA I21 : 0 - 20 mA / 20 - 0 mA	C1: 4 pin connector