

IFD6500 INSTRUCTION SHEET

安裝說明 安装说明 BILGI DÖKÜMANI

- ▲ USB/RS-485 Communication Interface
- ▲ USB/RS-485 通訊轉換模組
- ▲ USB/RS-485 通訊轉換模块
- ▲ USB/RS-485 Haberleşme Arayuz



DVP-1225770-01

Warning

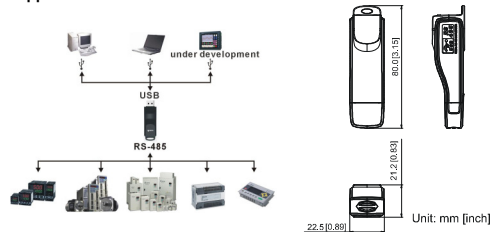
- ✓ Please thoroughly read this instruction sheet before installation and putting it into use.
- ✓ The content of this instruction sheet and the driver file may be revised without prior notice. Please consult our distributors or download the most updated instruction/driver version at http://www.delta.com.tw/product/em/control/cm/control_cm_main.asp

Introduction

IFD6500 is a convenient RS-485-to-USB converter, which does not require external power-supply and complex setting process. It supports baud rate from 75 to 115.2kbps and auto switching direction of data transmission. In addition, it adopts RJ-45 in RS-485 connector for users to wire conveniently. And its tiny dimension, handy use of plug-and-play and hot-swap provide more conveniences for connecting all DELTA IABU products to your PC.

Applicable Models: All DELTA IABU products.

Application & Dimension



Specifications

Power supply	No external power is needed
Power consumption	0.4W
Isolated voltage	2,500VDC
Baud rate	75, 150, 300, 600, 1,200, 2,400, 4,800, 9,600, 19,200, 38,400, 57,600, 115,200 bps
RS-485 connector	RJ-45
USB connector	A type (plug)
Compatibility	Full compliance with USB V2.0 specification
Max. cable length	RS-485 Communication Port: 100 m
Support RS-485 half-duplex transmission	

RJ-45



PIN	Description	PIN	Description
1	Reserved	5	SG-
2	Reserved	6	Reserved
3	Reserved	7	Reserved
4	SG+	8	Reserved

Preparations before Driver Installation

Please extract the driver file (IFD6500_Drivers.exe) by following steps. You could find driver file (IFD6500_Drivers.exe) in the CD supplied with IFD6500.

Note: DO NOT connect IFD6500 to PC before extracting the driver file.

STEP 1 Welcome to the InstallShield Wizard for Silicon Laboratories CP210x Evaluation Kit Tools.
STEP 2 License Agreement. Please read the following license agreement carefully.
STEP 3 Choose Destination Location. Select the folder where Setup will install files.
STEP 4 InstallShield Wizard Complete. Setup has finished installing Silicon Laboratories CP210x Evaluation Kit Tools Release 3.31 on your computer.
STEP 5 You should have a folder named SiLabs under drive C.

Driver Installation

After connecting IFD6500 to PC, please install driver by following steps.

STEP 1 Welcome to the Found New Hardware Wizard. Windows will search for drivers and installed software for helping on your computer, or the hardware installation CD, on the Windows Update web, and with your computer.
STEP 2 The wizard helps you install software for CP210x USB to UART Bridge Controller. If your hardware came with an installation CD, please insert it now.
STEP 3 Please choose your search and installation options. Search for the best driver in these locations. Use the check boxes below to list or expand the default search, which includes local paths and removable media. The best driver found will be installed.

STEP 3 Found New Hardware Wizard. Please wait while the wizard searches.
STEP 4 Found New Hardware Wizard. Completing the Found New Hardware Wizard. The wizard has finished installing the software for CP210x USB to UART Bridge Controller.
STEP 5 Repeat Step 1 to Step 4 to complete COM PORT setting.

LED Display

- Steady Green LED ON: power is ON.
- Blinking orange LED: data is transmitting.

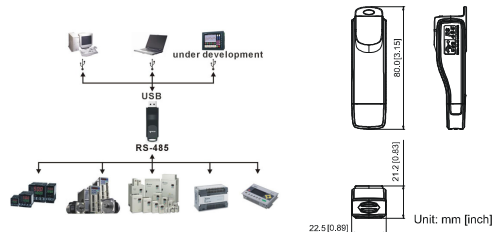
注意事項

- ✓ 請詳細閱讀下列說明後才使用本產品，以確保使用安全。
- ✓ 由於產品精益求精，當內容規格或驅動程式有所修正時，請洽詢代理商或至台灣網站 (http://www.delta.com.tw/product/em/control/cm/control_cm_main.asp) 下載最新版本。

產品簡介

IFD6500 RS-485/USB 轉換裝置，不需外接電源，不需任何設定，即可支援不同的傳輸速率從 75 到 115.2 kbps，並可自動切換資料流方向。通過 USB 接口有隨時即用和熱插拔的方便性，提供和 RS-485 裝置的普通介面，體積小且方便使用，RS485 採用 RJ-45 網路線接口，使用者能更便利的接線。適用機種：台達電子 IABU 全系列產品。

產品應用及外觀尺寸



功能規格

電源需求	不需外接電源
消耗功率	0.4W
隔離電壓	2,500VDC
傳輸速度	75, 150, 300, 600, 1,200, 2,400, 4,800, 9,600, 19,200, 38,400, 57,600, 115,200 bps
RS-485 端子形式	RJ-45
USB 接頭	A type (plug)
相容性	符合 USB V2.0 規格
最大使用線長	RS-485 通訊埠：100 公尺
支援 RS-485 半雙工	

RJ-45



PIN	說明	PIN	說明
1	保留	5	SG-
2	保留	6	保留
3	保留	7	保留
4	SG+	8	保留

安裝驅動程式前準備工作

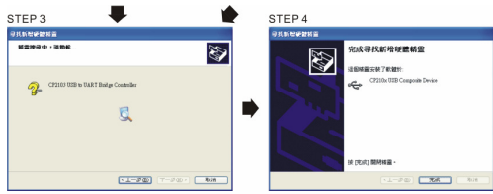
請將隨機所附 CD 內的 USB 驅動程式檔 (IFD6500_Drivers.exe) 依下列步驟解壓縮。
註：在解壓縮檔案前，請勿將 IFD6500 插入電腦。

STEP 1 Welcome to the InstallShield Wizard for Silicon Laboratories CP210x Evaluation Kit Tools.
STEP 2 License Agreement. Please read the following license agreement carefully.
STEP 3 Choose Destination Location. Select the folder where Setup will install files.
STEP 4 InstallShield Wizard Complete. Setup has finished installing Silicon Laboratories CP210x Evaluation Kit Tools Release 3.31 on your computer.
STEP 5 完成後，IFD6500 驅動程式將會被放置於 c:\SiLabs

安裝驅動程式

請將 IFD6500 連接至電腦 USB 埠，完成後，請依以下步驟安裝。

STEP 1 Found New Hardware Wizard. Windows will search for drivers and installed software for helping on your computer, or the hardware installation CD, on the Windows Update web, and with your computer.
STEP 2 The wizard helps you install software for CP210x USB to UART Bridge Controller. If your hardware came with an installation CD, please insert it now.
STEP 3 Please choose your search and installation options. Search for the best driver in these locations. Use the check boxes below to list or expand the default search, which includes local paths and removable media. The best driver found will be installed.



STEP 5
重复以上 Step 1至 Step 4 以完成 COM PORT 设定

6 LED 显示

1. 绿色 LED 亮起，表示有电源。
2. 橘色 LED 闪烁，表示资料传输。

⚠ 注意事项

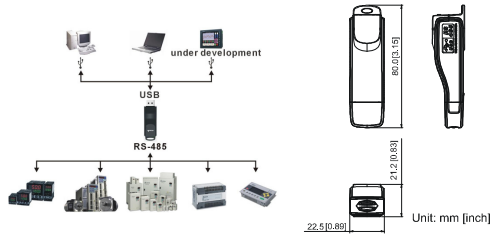
- ✓ 请仔细阅读下列说明后才使用本产品，以确保使用安全。
- ✓ 由于产品精益求精，当内容规格或驱动程序有所修正时，请洽询代理商或至台湾网站 (http://www.delta.com.tw/product/em/control/cm/control_cm_main.asp) 下载最新版本。

1 产品简介

IFD6500 RS-485/USB 转换装置，不需外接电源，不需任何设定，即可支持不同的传输速率从 75 到 115.2 kbps，并可自动切换数据流方向。通过 USB 接口有随插即用和热插拔的方便性，提供和 RS-485 装置的沟通接口，体积小且方便使用，RS485 采用 RJ-45 网络线接口，使用者能更便利的接线。

适用机种：台达电子 IABU 全系列产品

■ 产品应用及外观尺寸



2 功能规格

电源需求	不需外接电源
消耗功率	0.4W
隔离电压	2,500VDC
传输速度	支援 75, 150, 300, 600, 1,200, 2,400, 4,800, 9,600, 19,200, 38,400, 57,600, 115,200 bps
RS-485 端子形式	RJ-45
USB 接头	A type (plug)
兼容性	符合 USB V2.0 规格
最大使用线长	RS-485 通讯端口：100 公尺
支援 RS-485 半双工	

■ RJ-45

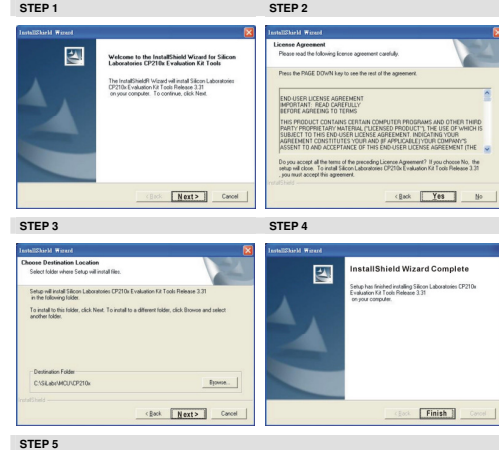


PIN	说明	PIN	说明
1	保留	5	SG-
2	保留	6	保留
3	保留	7	保留
4	SG+	8	保留

3 安装驱动程序前准备工作

请将随机所附 CD 内的 USB driver 驱动程序档 (IFD6500_Drivers.exe) 依下列步骤解压缩。

注：在解压缩档前，请勿将 IFD6500 插入计算机。



STEP 5
完成后，IFD6500 驱动程序将会被放置于 c:\SiLabs

4 安装驱动程序

请将 IFD6500 连接至电脑 USB 埠，完成后，请依以下步骤安装。



请浏览选择目录，或直接输入
C:\SiLabs\MCU\CP210x\WIN



STEP 5
重复以上 Step 1至 Step 4 以完成 COM PORT 设置

6 LED 显示

1. 绿色 LED 亮起，表示有电源。
2. 橘色 LED 闪烁，表示数据传输。

⚠ Warning

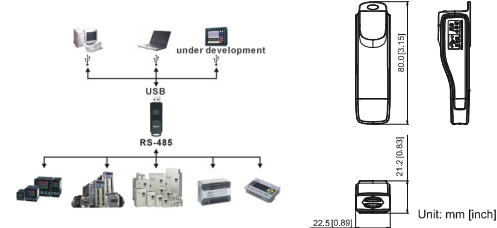
- ✓ Lütfen ürünü kullanmadan önce bu bilgi dokümanını tamamen okuyunuz.
- ✓ Bu bilgi dokümanını içeriği herhangi bir ihbara gerek kalmadan güncellenebilir. Son güncellenmiş halini almak için teknik servisimize bağlantınıza geçin veya <http://www.delta.com.tw/industrialautomation/internetadresindenindiririz>.

1 Önsöz

IFD6500 kullanışlı RS485-USB çevirici olup, harici güç kaynağı kullanılamasına ve herhangi özel bir ayar yapımına ihtiyaç duymaz. 75~115.2kbps geniş baud hızlarını destekler, otomatik data yönü değişimi sağlar. Bununla beraber RJ-45 konnektörü sayesinde kullanıcıya kolay RS-485 bağlantısı sağlar. Küçük boyutu, plug&play ve hot swap özelliği ile PC'den DELTA IABU ürünlerine kolayca bağlanabilir

Uygulanabilen modeller: Tüm DELTA ürünleri.

■ Uygulama & Ölçüler



2 Özellikler

Power Gereksinimi	Harici güç kaynağına ihtiyaç yok
Güç Tüketimi	0.4W
İzolasyon Voltajı	2,500VDC
Baud Hızı	75, 150, 300, 600, 1200, 2400, 4800, 9600, 19200, 38400, 57600, 115200bps destekler
RS-485 Konnektör	RJ-45
USB Konnektör	A tipi (plug)
Uyumluluk	USB V2.0 özelliklerine tamamen uyumlu
Maks. Kablo Uzunluğu	RS-485 Communication Port: 100 m
RS-485 Half-Duplex İletişimi destekler	

■ RJ-45

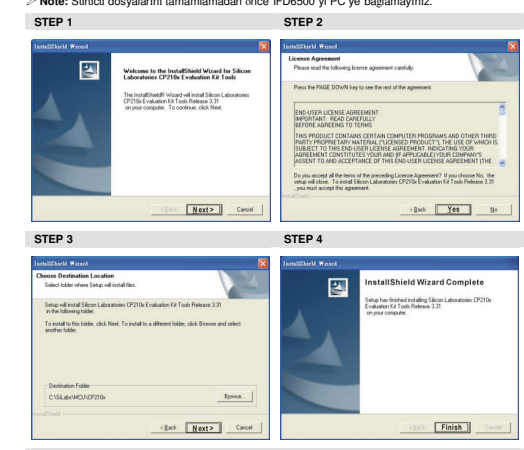


PIN	Sinyal Adı	PIN	Description
1	Rezerve	5	SG-
2	Rezerve	6	Rezerve
3	Rezerve	7	Rezerve
4	SG+	8	Rezerve

3 Driver Kurulumundan Önceki Hazırlık

Lütfen driver dosyasını (IFD6500_Drivers.exe) basamakları takip ederek kurunuz.Driver dosyasını(IFD6500_Drivers.exe) IFD6500'yi destekleyen CD'nin içinde bulabilirsiniz.

注: Sürücü dosyalarını tamamlamadan önce IFD6500'yi PC'ye bağlayınız.



STEP 5
You should have a folder marked SiLabs under drive C.

4 Driver Kurulumu

IFD6500'yi PC'ye bağladıktan sonra, lütfen basamakları takip ederek driver'i kurunuz.

Lütfen İngilizce versiyonu için sayfa 4-5'e bakınız.

6 LED Gösterimi

1. Yeşil sürekli ışık LED ON'güç "ON" dur.
2. Turuncu yanıp-sönüyorsa LED: data iletişimi.